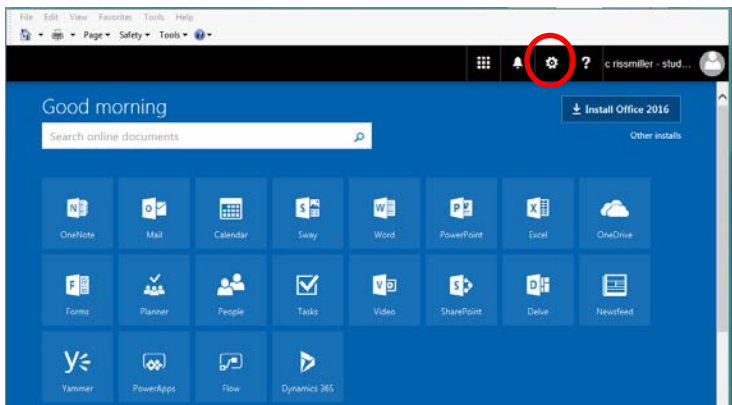
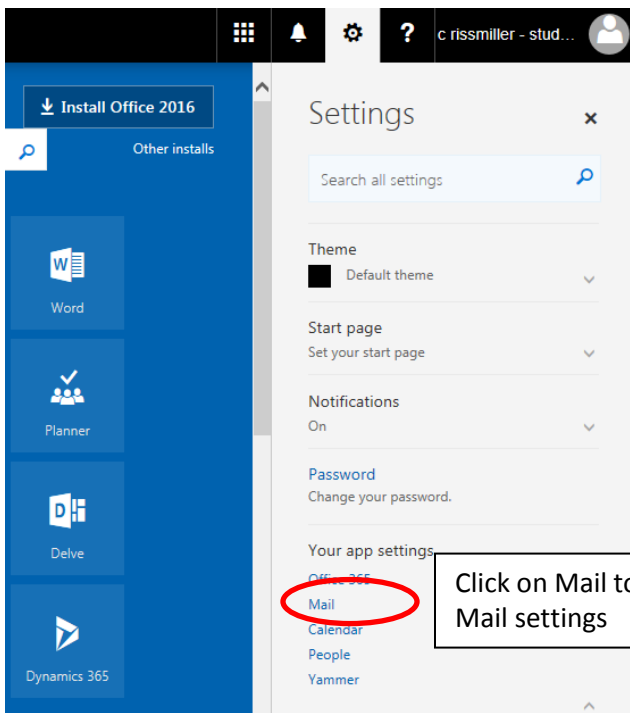


Your SRU account was possibly compromised and was recently disabled. Please complete the following to ensure you are able to receive new messages now that your account has again been enabled.

1. Log in to Office 365 and click on the settings icon

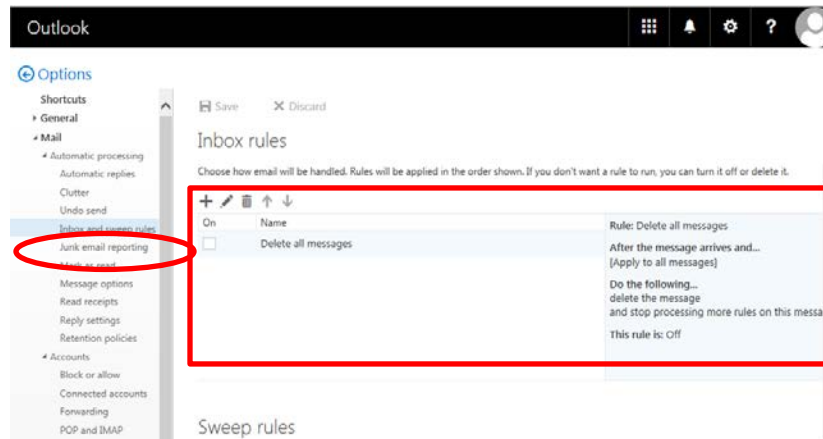


2.



Click on Mail to open the Mail settings

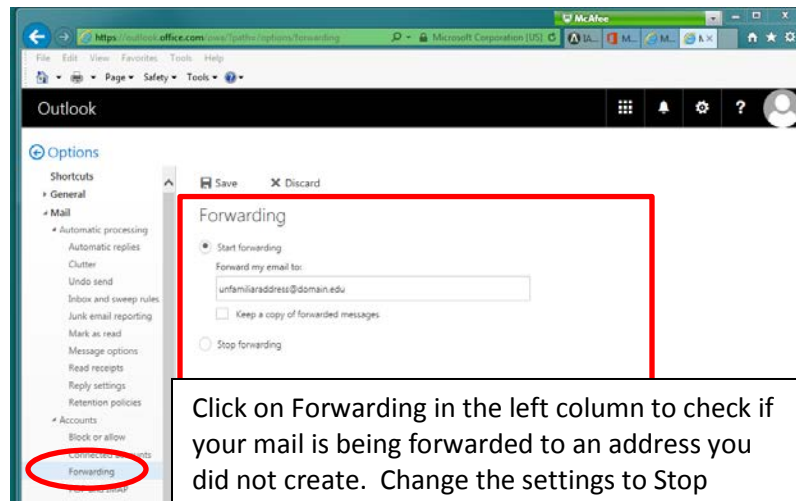
3.



Click on Inbox and Sweeping Rules in the left column to check for rules that were not created by you.

- Put a check beside any rule that you did not create, then click on the trash can to delete it
- Click on Save

4.



Click on Forwarding in the left column to check if your mail is being forwarded to an address you did not create. Change the settings to Stop forwarding, then click on Save.